



# Gatwick Airport Northern Runway Project

Environmental Statement

Appendix 8.10.1 – Tree Survey Report and Arboricultural Impact Assessment – Part 3 - Clean Version

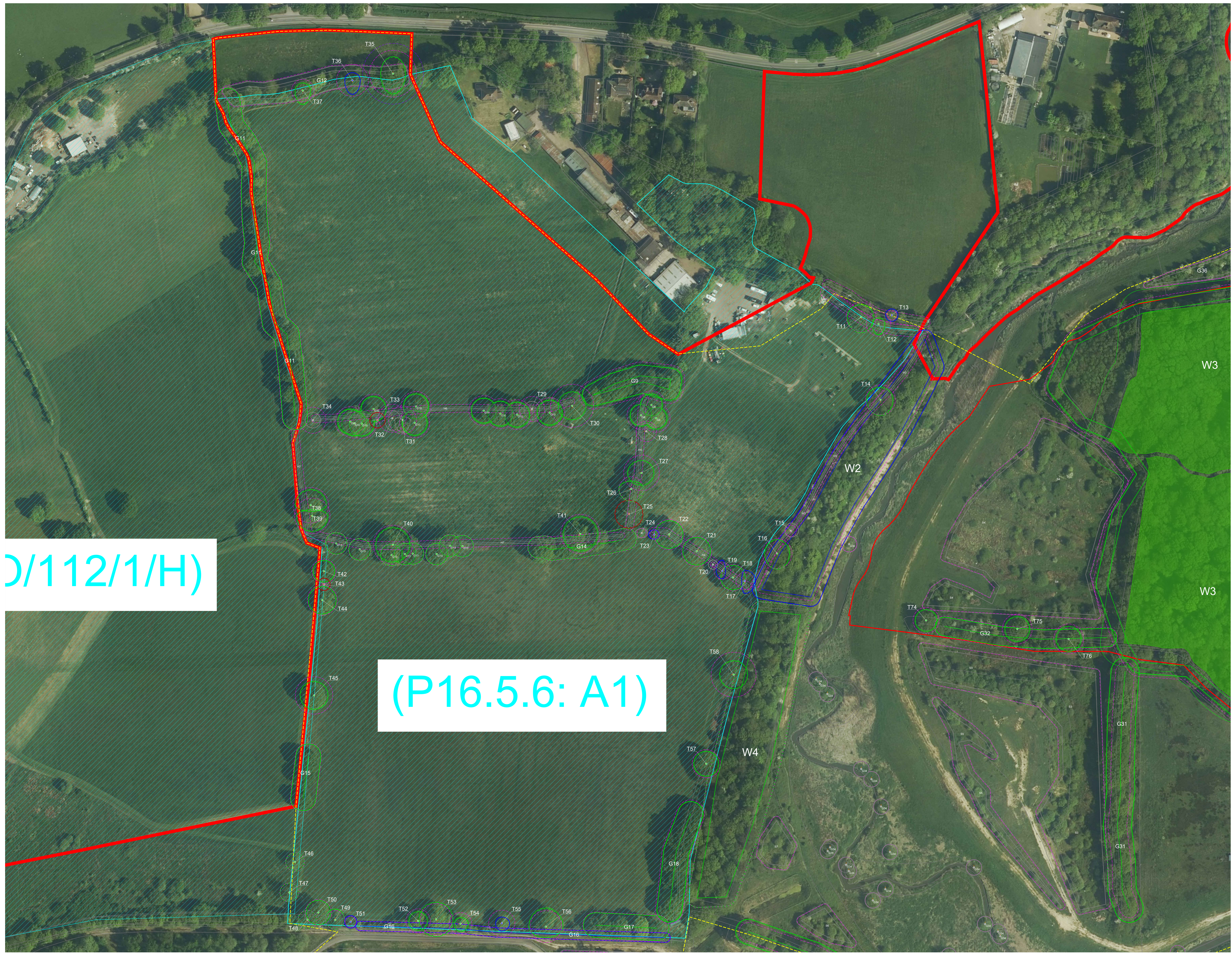
**Book 5**

VERSION: 3.0

DATE: JUNE 2024

Application Document Ref: 5.3

PINS Reference Number: TR020005



D/112/1/H)

(P16.5.6: A1)

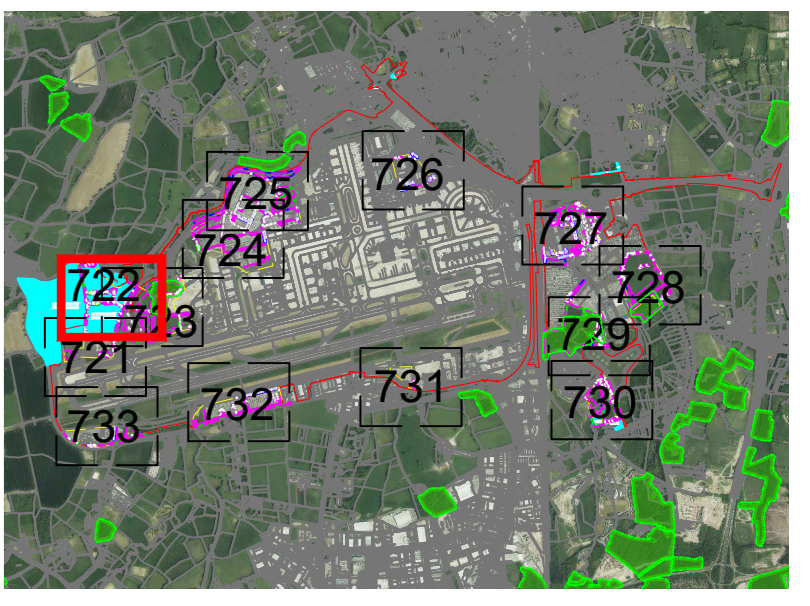
**Key**

- Site boundary.
  - Survey boundary.
  - Tree with numbered reference. Canopy spread and coloured BS5837:2012 tree quality category as shown below.
    - Tree details estimate (inaccessible tree)
    - Tree in off site location
  - Tree group plotted with individual stem locations and numbered reference. Canopy extents coloured to match BS5837:2012 tree quality category as shown below.
  - Tree or Vegetation group with numbered reference. Canopy extents coloured to match BS5837:2012 tree quality category as shown below and dashed line to show indicative stem line.
  - Hedge with numbered reference. Canopy extents coloured to match BS5837:2012 tree quality category as shown below and dashed line to show hedge centerline.
  - Woodland with numbered reference. Canopy extents coloured to match BS5837:2012 tree quality category as shown below and dashed line to show indicative tree line.
- BS 5837:2012 Tree Quality Categories - Table 1**
- Category A - High quality
  - Category B - Moderate quality
  - Category C - Low quality
  - Category U - Unsuitable for retention
- Direction of first significant branch
  - Root protection area (RPA). Calculated in accordance with Section 4.6 - BS5837:2012
  - Veteran tree buffer (15 x stem Ø) (as per standing advice produced by Forestry England and Natural England)
  - Tree protected by Tree Preservation Order. Bracketted number relates to the TPO reference.
  - Designated Ancient Woodland (as per Natural England ancient woodland inventory, via open data publication)
  - Ancient Woodland tree buffer (15m offset) (as per standing advice produced by Forestry England and Natural England)

**NOTES:**

- Refer to ES Appendix 8.10.1, Tree Survey Report and Arboricultural Impact Assessment for further details.
- Survey based on a visual inspection from the ground and is not intended as a full arboricultural inspection.
- Plan produced in accordance with recommendations set out in BS 5837:2012 - 'Trees in Relation to design, demolition and construction'.
- Survey based upon Aerial Photography and trees located by eye.

**Key Plan**



**DOCUMENT**

Environmental Statement

**DRAWING TITLE**

Airport Tree Survey Plans  
Appendix 8.10.1  
Sheet 2 of 13

DATE: June 2024

ORIENTATION	DRAWING NO.	REVISION
N 	722	For ES Issue
	DRAWN BY RC	PM / CHECKED BY DC

SCALE @ A0  
0m 25m 50m

Reproduced from Ordnance Survey map with the permission of Ordnance Survey on behalf of the controller of Her Majesty's Stationery Office © Crown Copyright (2023). License number 010031673, 10001998, 100048492.  
© Copyright 2023 Gatwick Airport Limited. No part of this drawing is to be reproduced without prior permission of Gatwick Airport Limited.



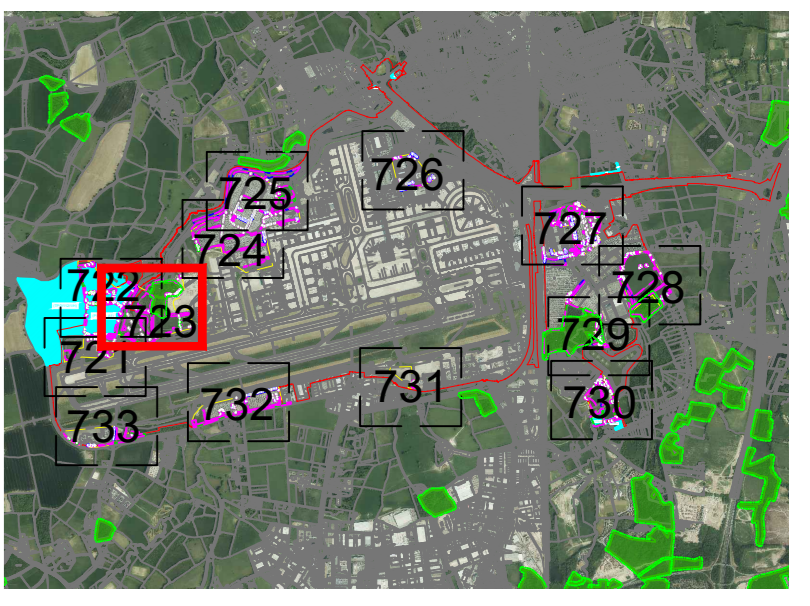
5.6: A1)

**Key**

- Site boundary.
  - Survey boundary.
  - Tree with numbered reference. Canopy spread and coloured BS5837:2012 tree quality category as shown below.
    - Tree details estimate (inaccessible tree)
    - Tree in off site location
  - Tree group plotted with individual stem locations and numbered reference. Canopy extents coloured to match BS5837:2012 tree quality category as shown below and dashed line to show indicative stem line.
  - Tree or Vegetation group with numbered reference. Canopy extents coloured to match BS5837:2012 tree quality category as shown below and dashed line to show indicative stem line.
  - Hedge with numbered reference. Canopy extents coloured to match BS5837:2012 tree quality category as shown below and dashed line to show hedge centerline.
  - Woodland with numbered reference. Canopy extents coloured to match BS5837:2012 tree quality category as shown below and dashed line to show indicative tree line.
- BS 5837:2012 Tree Quality Categories - Table 1**
- Category A - High quality
  - Category B - Moderate quality
  - Category C - Low quality
  - Category U - Unsuitable for retention
- Direction of first significant branch
  - Root protection area (RPA). Calculated in accordance with Section 4.6 - BS5837:2012
  - Veteran tree buffer (15 x stem Ø) (as per standing advice produced by Forestry England and Natural England)
  - Tree protected by Tree Preservation Order. Bracketted number relates to the TPO reference.
  - Designated Ancient Woodland (as per Natural England ancient woodland inventory, via open data publication)
  - Ancient Woodland tree buffer (15m offset) (as per standing advice produced by Forestry England and Natural England)

- NOTES:**
- Refer to ES Appendix 8.10.1, Tree Survey Report and Arboricultural Impact Assessment for further details.
  - Survey based on a visual inspection from the ground and is not intended as a full arboricultural inspection.
  - Plan produced in accordance with recommendations set out in BS 5837:2012, 'Trees in Relation to design, demolition and construction'.
  - Survey based upon Aerial Photography and trees located by eye.

**Key Plan**



**DOCUMENT**

Environmental Statement

**DRAWING TITLE**

Airport Tree Survey Plans  
Appendix 8.10.1  
Sheet 3 of 13

**DATE**

June 2024

**ORIENTATION**

N

**DRAWING NO.**

723

**REVISION**

For ES Issue

**DRAWN BY**

RC

**PM / CHECKED BY**

DC

**SCALE @ A0**



Reproduced from Ordnance Survey map with the permission of Ordnance Survey on behalf of the controller of Her Majesty's Stationery Office © Crown Copyright (2023). License number 0100031673, 10001998, 100048492.  
© Copyright 2023 Gatwick Airport Limited. No part of this drawing is to be reproduced without prior permission of Gatwick Airport Limited.



**Key**

- Site boundary.
- Survey boundary.
- Tree with numbered reference. Canopy spread and coloured BS5837:2012 tree quality category as shown below.
  - Tree details estimate (inaccessible tree)
  - Tree in off site location
- G1 Tree group plotted with individual stem locations and numbered reference. Canopy extents coloured to match BS5837:2012 tree quality category as shown below and dashed line to show indicative stem line.
- H1 Hedge with numbered reference. Canopy extents coloured to match BS5837:2012 tree quality category as shown below and dashed line to show hedge centerline.
- W1 Woodland with numbered reference. Canopy extents coloured to match BS5837:2012 tree quality category as shown below and dashed line to show indicative tree line.

**BS 5837:2012 Tree Quality Categories - Table 1**

- Category A - High quality
- Category B - Moderate quality
- Category C - Low quality
- Category U - Unsuitable for retention

Direction of first significant branch

Root protection area (RPA) Calculated in accordance with Section 4.6 - BS5837:2012

Veteran tree buffer (15 x stem Ø) (as per standing advice produced by Forestry England and Natural England)

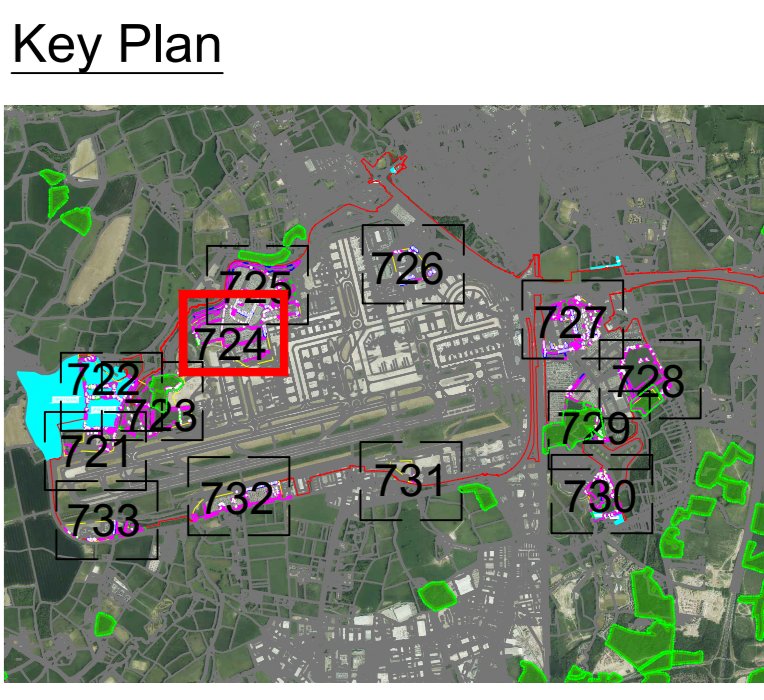
Tree protected by Tree Preservation Order. Bracketted number relates to the TPO reference.

Designated Ancient Woodland (as per Natural England ancient woodland inventory, via open data publication)

Ancient Woodland tree buffer (15m offset) (as per standing advice produced by Forestry England and Natural England)

**NOTES:**

- Refer to ES Appendix 8.10.1 Tree Survey Report and Arboricultural Impact Assessment for further details.
- Survey based on a visual inspection from the ground and is not intended as a full arboricultural inspection.
- Plan produced in accordance with recommendations set out in BS 5837:2012 'Trees in Relation to design, demolition and construction'.
- Survey based upon Aerial Photography and trees located by eye.



**DOCUMENT**

**Environmental Statement**

**DRAWING TITLE**

**Airport Tree Survey Plans Appendix 8.10.1 Sheet 4 of 13**

**DATE**

**June 2024**

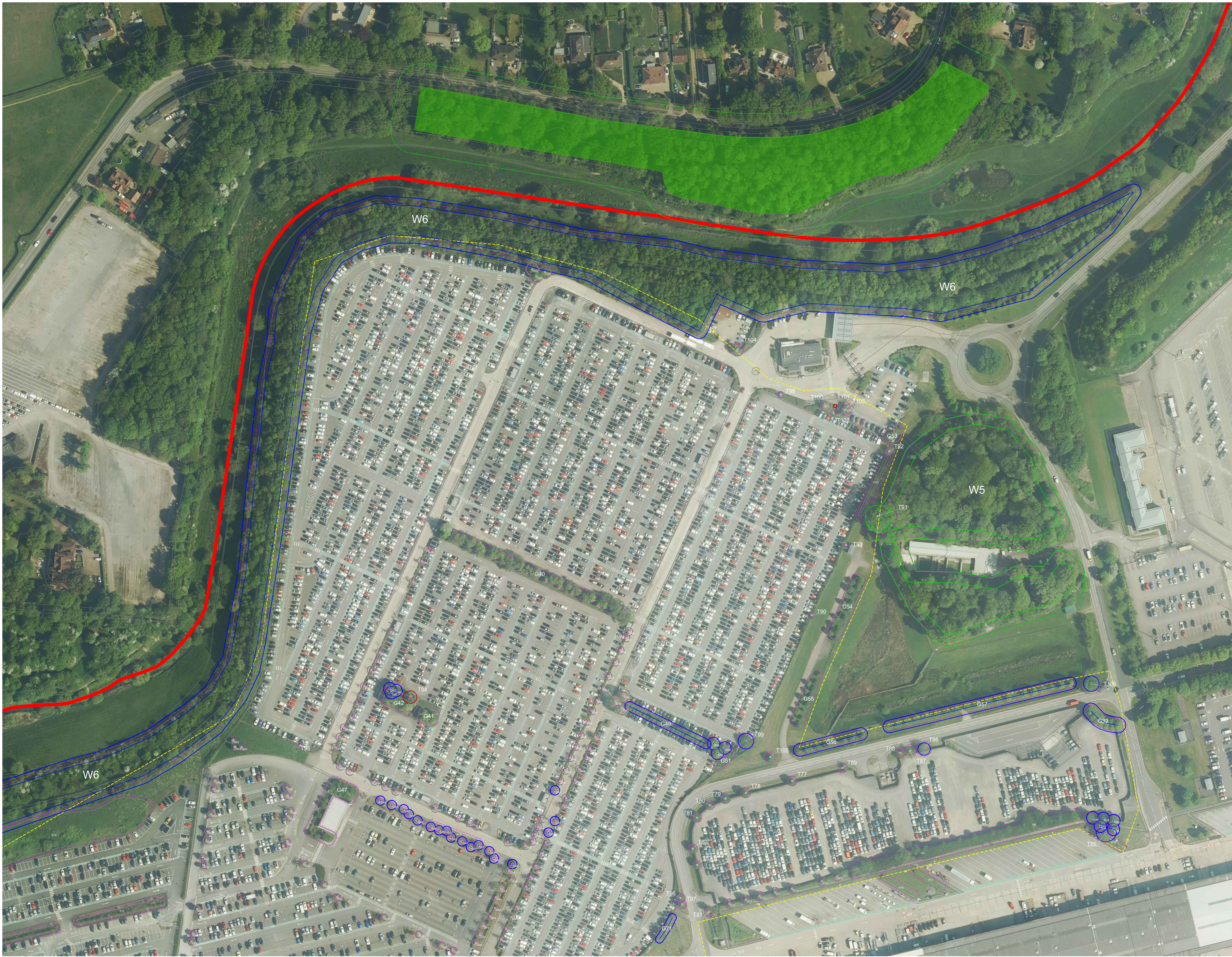
ORIENTATION	DRAWING NO.	REVISION
N	724	For ES Issue
	DRAWN BY	PM / CHECKED BY
	RC	DC

**SCALE @ A0**

0m 25m 50m

Reproduced from Ordnance Survey map with the permission of Ordnance Survey on behalf of the controller of Her Majesty's Stationery Office © Crown Copyright (2023). License number 0100031673, 100048492.

© Copyright 2023 Gatwick Airport Limited. No part of this drawing is to be reproduced without prior permission of Gatwick Airport Limited.

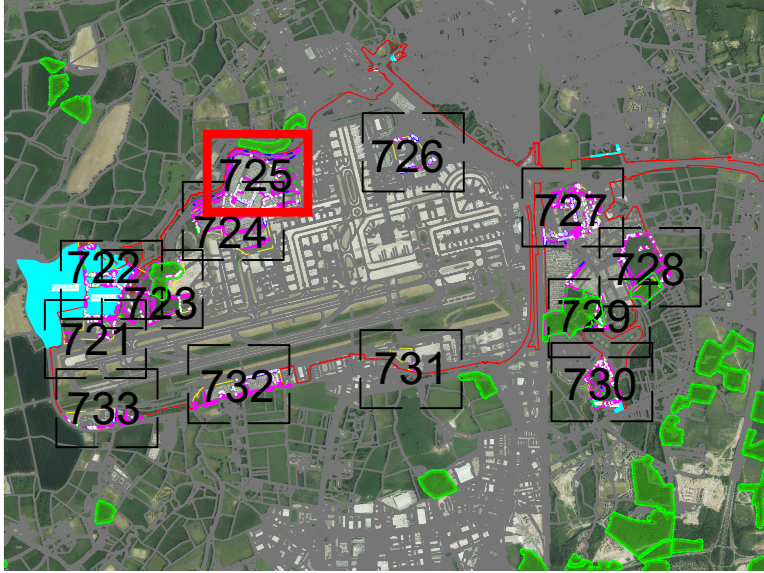


**Key**

- Site boundary.
  - Survey boundary.
  - Tree with numbered reference. Canopy spread and coloured BS5837:2012 tree quality category as shown below.
    - Tree details estimate (inaccessible tree)
    - Tree in off site location
  - Tree group plotted with individual stem locations and numbered reference. Canopy extents coloured to match BS5837:2012 tree quality category as shown below.
  - Tree or Vegetation group with numbered reference. Canopy extents coloured to match BS5837:2012 tree quality category as shown below and dashed line to show indicative stem line.
  - Hedge with numbered reference. Canopy extents and coloured BS5837:2012 tree quality category as shown below and dashed line to show hedge centerline.
  - Woodland with numbered reference. Canopy extents coloured to match BS5837:2012 tree quality category as shown below and dashed line to show indicative tree line.
- BS 5837:2012 Tree Quality Categories - Table 1**
- Category A - High quality
  - Category B - Moderate quality
  - Category C - Low quality
  - Category U - Unsuitable for retention
- Direction of first significant branch
  - Root protection area (RPA). Calculated in accordance with Section 4.6 - BS5837:2012
  - Veteran tree buffer (15 x stem Ø) (as per standing advice produced by Forestry England and Natural England)
  - Tree protected by Tree Preservation Order. Bracketted number relates to the TPO reference.
  - Designated Ancient Woodland (as per Natural England ancient woodland inventory, via open data publication)
  - Ancient Woodland tree buffer (15m offset) (as per standing advice produced by Forestry England and Natural England)

- NOTES:**
- Refer to ES Appendix 8.10.1 Tree Survey Report and Arboricultural Impact Assessment for further details.
  - Survey based on a visual inspection from the ground and is not intended as a full arboricultural inspection.
  - Plan produced in accordance with recommendations set out in BS 5837:2012 - 'Trees in Relation to design, demolition and construction'.
  - Survey based upon Aerial Photography and trees located by eye.

**Key Plan**

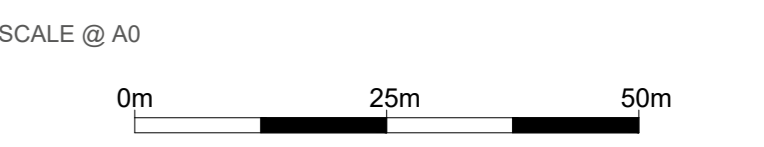


**DOCUMENT**  
Environmental Statement

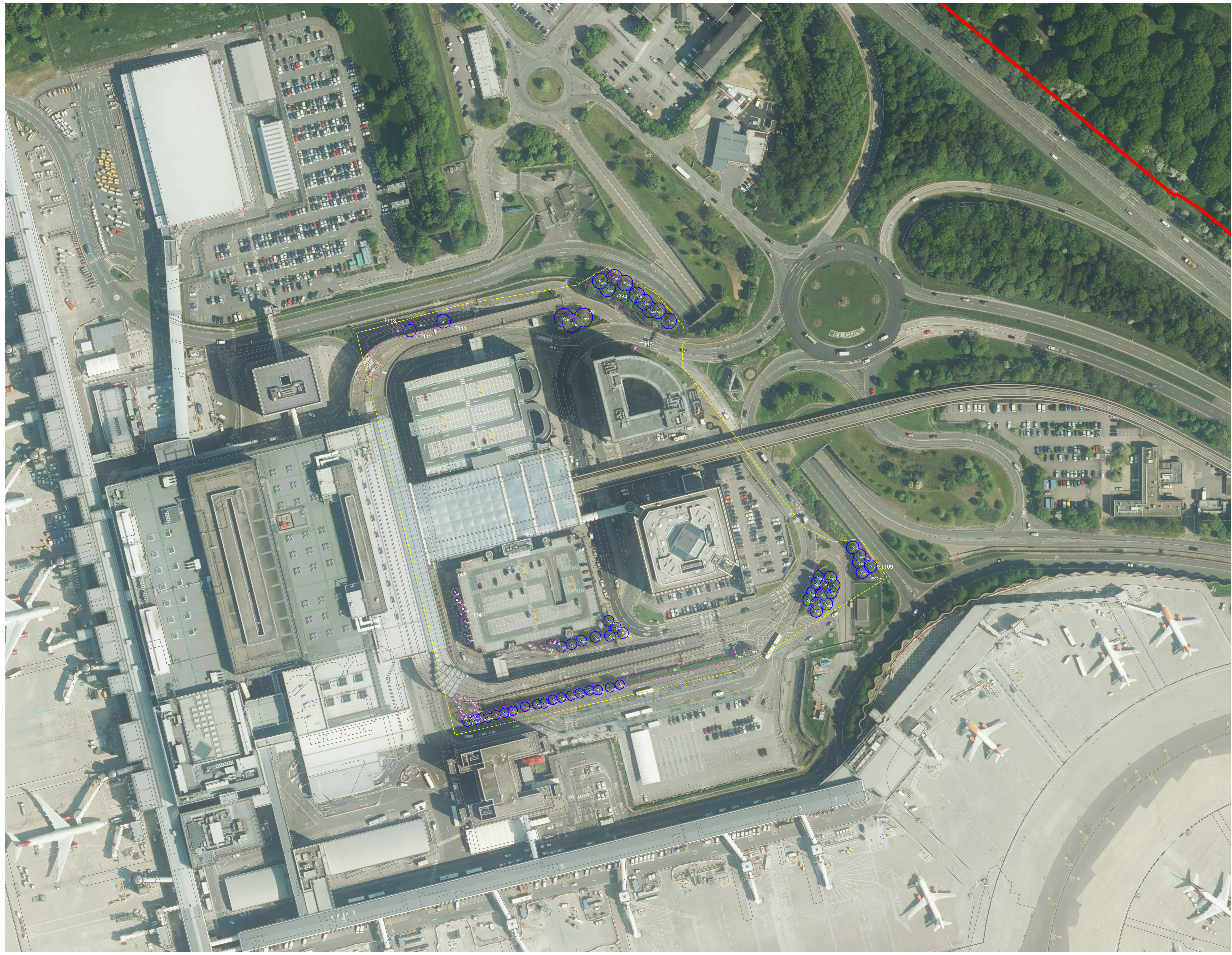
**DRAWING TITLE**  
Airport Tree Survey Plans  
Appendix 8.10.1  
Sheet 5 of 13

**DATE**  
June 2024

ORIENTATION	DRAWING NO.	REVISION
	N	725
SCALE @ A0	DRAWN BY	PM / CHECKED BY
	RC	DC



Reproduced from Ordnance Survey map with the permission of Ordnance Survey on behalf of the controller of Her Majesty's Stationery Office © Crown Copyright (2023). License number 010031673, 10001998, 100048492.  
© Copyright 2023 Gatwick Airport Limited. No part of this drawing is to be reproduced without prior permission of Gatwick Airport Limited.



### Key

- Site boundary.
- Survey boundary.
- Tree with numbered reference. Canopy spread and coloured BS5837:2012 tree quality category as shown below.
  - Tree details estimate (inaccessible tree)
  - Tree in off site location
- Tree group plotted with individual stem locations and numbered reference. Canopy extends coloured to match BS5837:2012 tree quality category as shown below and dashed line to show indicative stem line.
- Tree or Vegetation group with numbered reference. Canopy extends coloured to match BS5837:2012 tree quality category as shown below and dashed line to show indicative stem line.
- Hedge with numbered reference. Canopy extends coloured to match BS5837:2012 tree quality category as shown below and dashed line to show hedge centerline.
- Woodland with numbered reference. Canopy extends coloured to match BS5837:2012 tree quality category as shown below and dashed line to show indicative tree line.

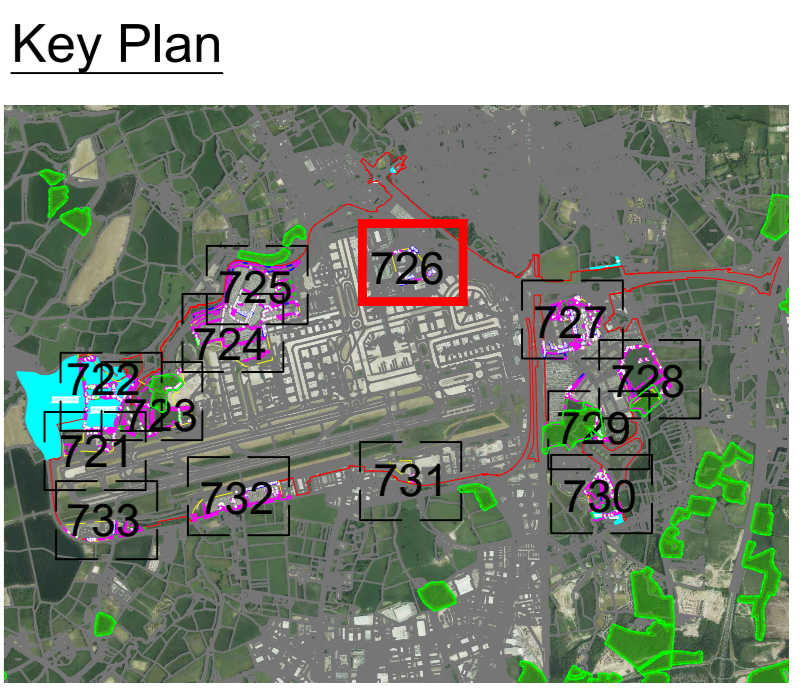
**BS 5837:2012 Tree Quality Categories - Table 1**

- Category A - High quality
- Category B - Moderate quality
- Category C - Low quality
- Category U - Unsuitable for retention

- Direction of first significant branch
- Root protection area (RPA). Calculated in accordance with Section 4.6 - BS5837:2012
- Veteran tree buffer (15 x stem Ø) (as per standing advice produced by Forestry England and Natural England)
- Tree protected by Tree Preservation Order. Bracketted number relates to the TPO reference.
- Designated Ancient Woodland (as per Natural England ancient woodland inventory, via open data publication)
- Ancient Woodland tree buffer (15m offset) (as per standing advice produced by Forestry England and Natural England)

**NOTES:**

- Refer to ES Appendix 8.10.1. Tree Survey Report and Arboricultural Impact Assessment for further details.
- Survey based on a visual inspection from the ground and is not intended as a full arboricultural inspection.
- Plan produced in accordance with recommendations set out in BS 5837:2012 - 'Trees in Relation to design, demolition and construction'.
- Survey based upon Aerial Photography and trees located by eye.



DOCUMENT

**Environmental Statement**

---

DRAWING TITLE

**Airport Tree Survey Plans  
Appendix 8.10.1  
Sheet 6 of 13**

DATE

**June 2024**

ORIENTATION 	DRAWING NO. <b>726</b>	REVISION <b>For ES Issue</b>
	DRAWN BY <b>RC</b>	PM / CHECKED BY <b>DC</b>

SCALE @ A0

0m 25m 50m

Reproduced from Ordnance Survey map with the permission of Ordnance Survey on behalf of the controller of Her Majesty's Stationery Office © Crown Copyright (2023). License number 0100031673, 10004892, 10004892.

© Copyright 2023 Gatwick Airport Limited. No part of this drawing is to be reproduced without prior permission of Gatwick Airport Limited.



### Key

- Site boundary.
- Survey boundary.
- Tree with numbered reference. Canopy spread and coloured BS5837:2012 tree quality category as shown below.
  - Tree details estimate (inaccessible tree)
  - Tree in off site location
- G1 Tree group plotted with individual stem locations and numbered reference. Canopy extents coloured to match BS5837:2012 tree quality category as shown below and dashed line to show indicative stem line.
- H1 Hedge with numbered reference. Canopy extents coloured to match BS5837:2012 tree quality category as shown below and dashed line to show hedge centerline.
- W1 Woodland with numbered reference. Canopy extents coloured to match BS5837:2012 tree quality category as shown below and dashed line to show indicative tree line.

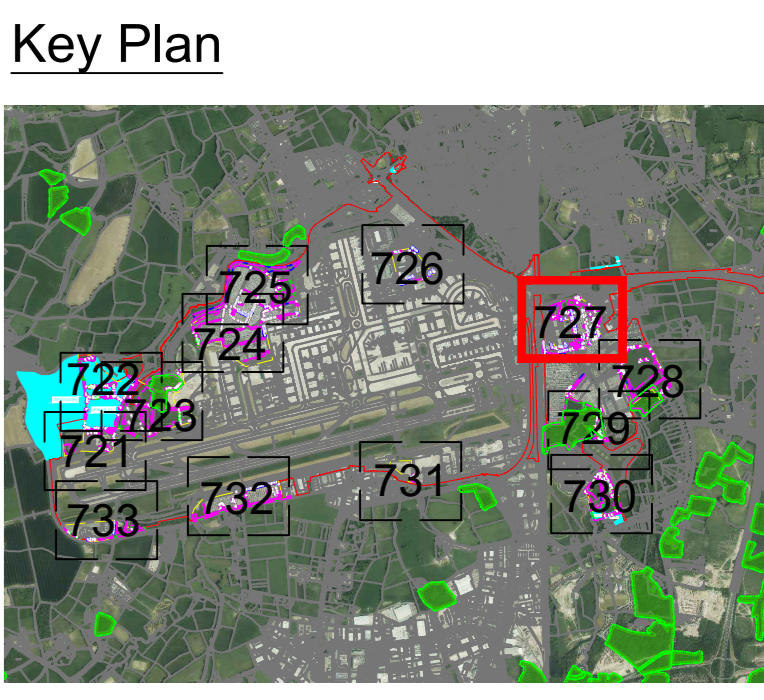
**BS 5837:2012 Tree Quality Categories - Table 1**

- Category A - High quality
- Category B - Moderate quality
- Category C - Low quality
- Category U - Unsuitable for retention

- Direction of first significant branch
- Root protection area (RPA) Calculated in accordance with Section 4.6 - BS5837:2012
- Veteran tree buffer (15 x stem Ø) (as per standing advice produced by Forestry England and Natural England)
- Tree protected by Tree Preservation Order. Bracketted number relates to the TPO reference.
- Designated Ancient Woodland (as per Natural England ancient woodland inventory, via open data publication)
- Ancient Woodland tree buffer (15m offset) (as per standing advice produced by Forestry England and Natural England)

**NOTES:**

- Refer to ES Appendix 8.10.1. Tree Survey Report and Arboricultural Impact Assessment for further details.
- Survey based on a visual inspection from the ground and is not intended as a full arboricultural inspection.
- Plan produced in accordance with recommendations set out in BS 5837:2012 - 'Trees in Relation to design, demolition and construction'.
- Survey based upon Aerial Photography and trees located by eye.



DOCUMENT

**Environmental Statement**

DRAWING TITLE

**Airport Tree Survey Plans  
Appendix 8.10.1  
Sheet 7 of 13**

DATE

**June 2024**

ORIENTATION	DRAWING NO.	REVISION
	N	727
	DRAWN BY	PM / CHECKED BY
	RC	DC

SCALE @ A0

Reproduced from Ordnance Survey map with the permission of Ordnance Survey on behalf of the controller of Her Majesty's Stationery Office © Crown Copyright (2023). License number 010031673, 10004988, 100048492.

© Copyright 2023 Gatwick Airport Limited. No part of this drawing is to be reproduced without prior permission of Gatwick Airport Limited.